

## Standardized Drum Mounting Bolt Hole

On outboard mounted drums, Gunitite has standardized the drum mounting bolt hole size to 1-1/4" for front steer axle applications and 1" for rear drive axle and trailer axle applications.

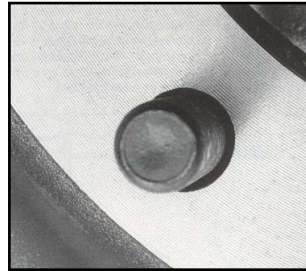
The clearance between the drum hole and the wheel bolt (when the smaller bolt is used) is not a problem because the drum is centered by the hub pilot. The drum is held in place when the wheel is torqued against the drum. When proper mounting hardware is used and wheel torque's are maintained, (see below for proper torque) the drum will be secure on the hub.



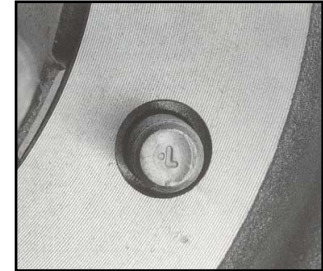
22mm Wheel Bolt



1 - 1/8" Wheel Bolt



22mm Wheel Bolt



3/4" Wheel Bolt

## Disc Wheel Mounting Torques

Mounting Type	Nut Thread	Torque Level Ft. Lbs. (oiled)*
Hub Piloted with Flange Nut	11/16" - 16	300 - 400
	M20 X 1.5	280 - 330
	M22 X 1.5	450 - 500

\* Apply two drops of motor oil to the point between the nut and the flange and two drops of motor oil to the last two or three threads at the end of each stud.

Mounting Type	Nut Thread	Torque Level Ft. Lbs. (dry)**
Stud Piloted, Double Cap Nut Standard Type – 7/8" Radius	3/4" - 16	450 - 500
	1-1/8" - 16	450 - 500
Stud Piloted, Double Cap Nut Heavy-Duty Type – 1-3/16" Radius	15/16" - 12	750 - 900
	1-1/8" - 16	750 - 900
	1-5/16" - 12	750 - 900

\*\*NOTE: Never lubricate wheel, nut ball seats or mounting faces.