



## Accuride Off Highway Wheels



Accuride Wheels Europe and Asia

## The Company

At our company, we're proud of our extensive experience and long-standing reputation as a leading manufacturer of steel wheels. With a global footprint and a team of knowledgeable sales representatives worldwide, we are committed to delivering the highest quality standards and innovative solutions to meet the diverse needs of our customers. Our global sales representatives are always available to assist you in finding the perfect solution for your needs. Whether you are in Europe, North America, or Asia, we have a team of experts ready to help you with any questions you may have.



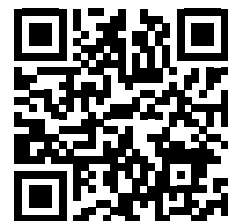
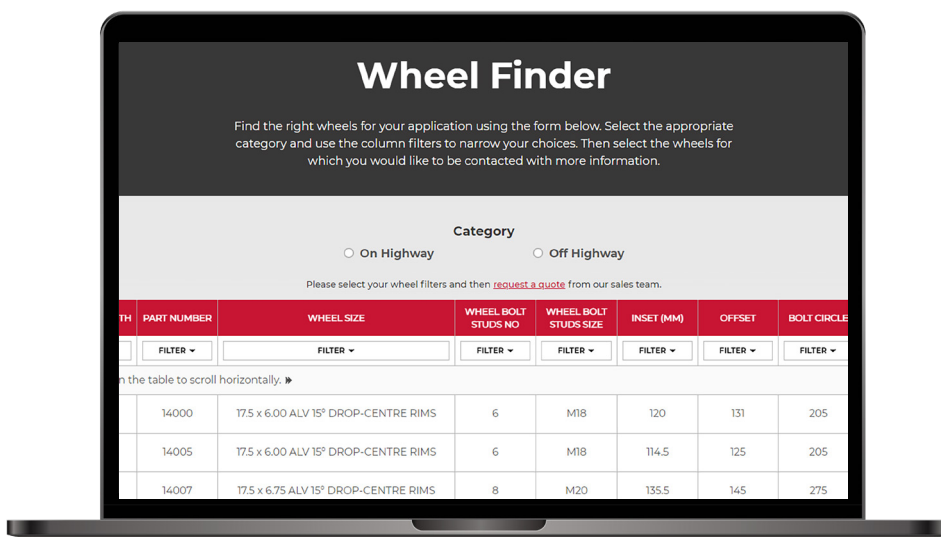
We have earned the trust of the biggest names in the industry, and we continue to work tirelessly to maintain our position as a trusted partner for manufacturers around the world.

From concept to production, we are dedicated to providing exceptional service, top-of-the-line products, and innovative solutions that help our customers stay ahead of the curve. Choose our company for your next project and experience the difference that comes with working with the leading manufacturer in the industry.

Our steel wheels are the perfect choice for a wide range of applications, including agricultural, construction, mining, forestry equipment and material handling. Its rugged construction and superior design provide excellent traction, stability, and control, allowing you to work with confidence and efficiency in any environment.

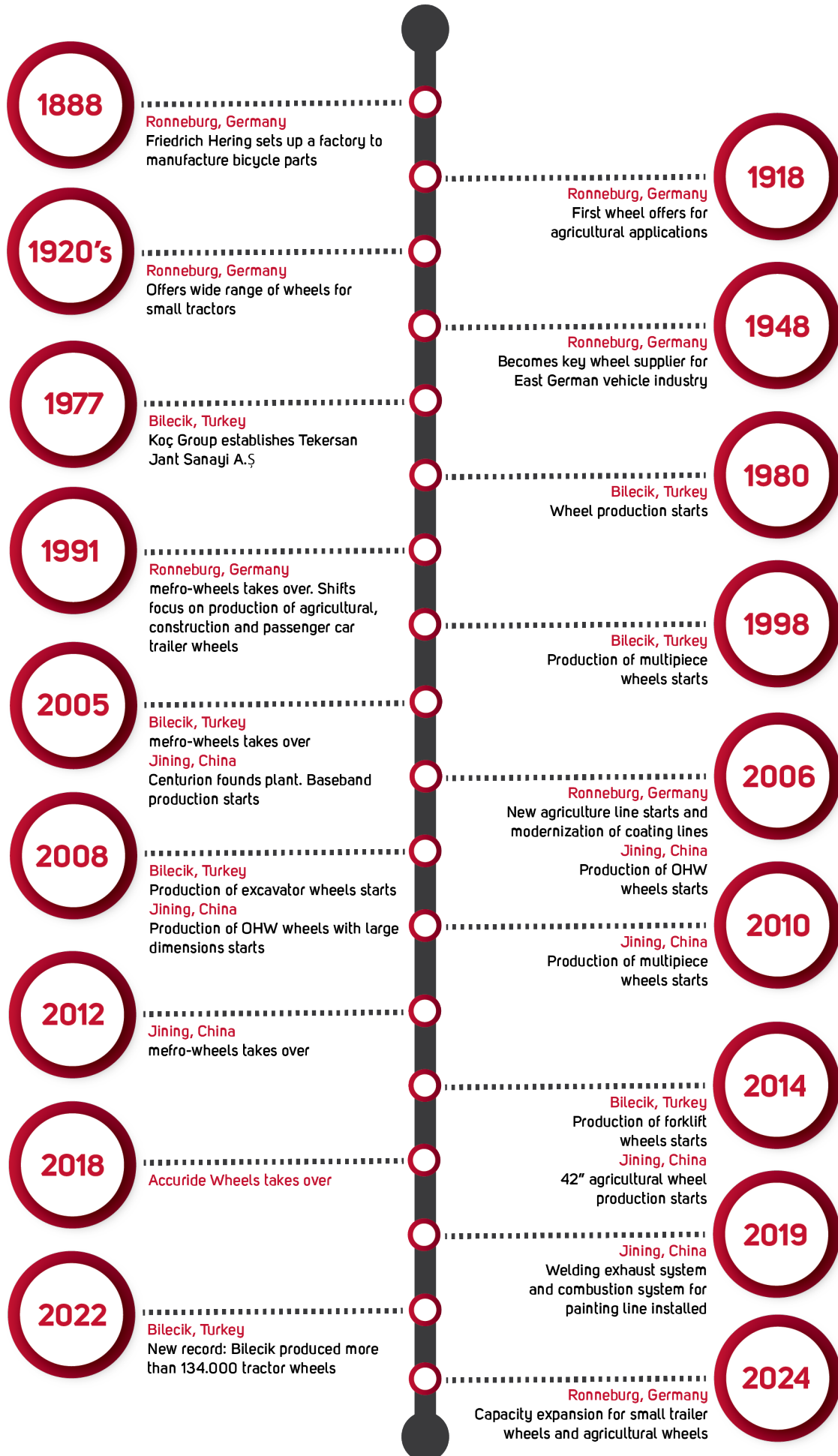
## Euro-Spec Wheel Finder

Use Accuride's Euro-Spec Wheel Finder tool to find the best product for your application. Based on your specific criteria, it generates the available options for you, revealing the part numbers and providing an opportunity to obtain a quotation.



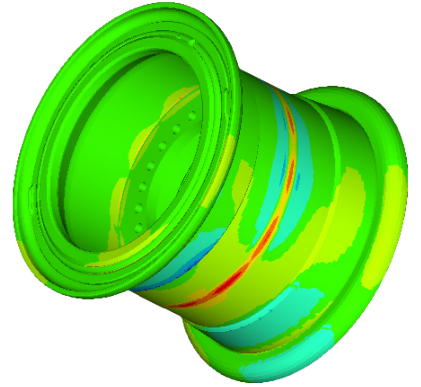
Scan the QR code on any page to access the Accuride's Wheel Finder.

[accuridecorp.com/wheel-finder](https://accuridecorp.com/wheel-finder)



## R&D Excellence

Accuride Wheels Europe & Asia central R&D is based at the headquarter in Solingen-Germany and manages with its central structure all worldwide Off Highway projects from all production facilities of the group. In addition, local R&D teams in Turkey and China are installed to keep a close technical contact to local customers. The innovative excellence of the R&D team has resulted in many outstanding innovations. The success of these innovations has been documented in several worldwide patents and customer awards and underlines the clear global leadership position and pioneering role in the development and manufacturing of OEM steel wheels for on-highway and off-highway vehicles.



All new product developments are driven by a common project flow, fully in line with today's customer requirements and ISO/TS 16949 specifications.

Furthermore, the R&D department is working with state of the art CAD software (Catia V5). In the beginning all future products are generated as 3D models and verified and optimized with newest FEM software (ALTAIR) in order to ensure the conformity to fatigue life requirements at an early stage. Shortest possible project schedules are guaranteed via existing interfaces between 3D-wheel design, tool design and tool manufacturing processes.

Accuride Wheels offers all necessary equipment for wheel fatigue life tests, dimensional controls, material-, welding seam- and surface protection verifications in house, a highly efficient and fast execution of customer projects is ensured as no outside laboratories are needed.

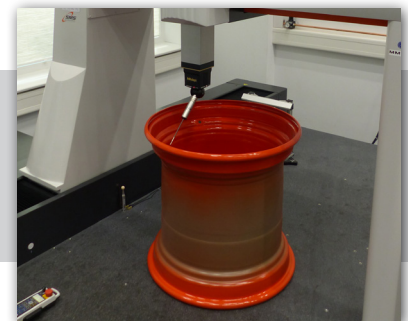
Accuride Wheels Engineers are members of significant technical standardization organisations like ETRTO, EUWA, DIN & ISO, SAE.



Radial Fatigue Test Machine for Large OHW Wheels



Cornering Fatigue Test Rigs



CMM

## Integrated Management System Policy

Our customers depend on our products to deliver value and perform reliably. That's why Accuride's core values reflect our commitment to technology and quality leadership. To consistently achieve this leadership, we create a safe work environment for our employees and drive proactive and continuous improvement.

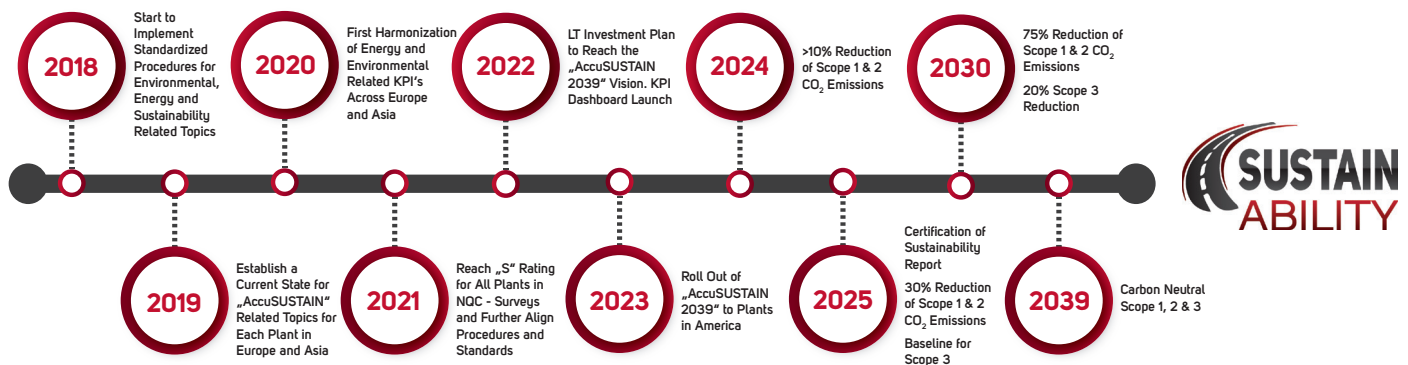
Accuride maintains the Quality and Lean Management System (QLMS) as well as the Energy, Environmental, Health and Safety Systems (EHS) and combines them into the Integrated Management System (IMS). While individual Accuride Wheels Europe and Asia facilities may own different certifications, all facilities are operating in accordance with the IMS Policy. Accuride provides necessary resources to ensure that those targets can be achieved and provides training to all associates. Compliance with this policy is the responsibility of every Accuride Wheels Europe and Asia associate. Therefore, the IMS Policy and objectives are communicated across all facilities throughout the organization.

## Count on our Accountability

The protection of the environment and the health and safety of our associates, customers, suppliers, and the communities in which we work are among Accuride's most critical concerns.

Accuride will provide a safe and healthy workplace, protect the environment, and ensure that pertinent environmental, health and safety issues are incorporated in the planning and execution of the Company's business. We will conduct our business in compliance with Company and all other applicable EHS regulations.

Sustainability-oriented supply chain management is an important part of our policy. We respect the working conditions and human rights of our associates and partners and act in an ecologically, economically and socially responsible manner.



## Quality, EHS and Lean is Part of our Culture

As a manufacturer of safety-related parts, quality is of paramount importance. We strive for full customer satisfaction and take all necessary and economically feasible actions to reach that target and continuously improve our processes.

The IMS endeavours to provide the right products, right quality, right quantities at the right time to achieve customer satisfaction and avoid waste of labour, energy, other resources and capital. Air and water quality, water consumption as well as appropriate management of chemicals is also particularly important for us. Accuride drives continuous improvement processes to reduce the consumption of those resources and monitors, reports and regularly assesses all relevant KPI's across the Business Unit.

Every associate is obligated to apply the Quality, EHS and Lean Management System according to our manuals and ISO/IATF standards and work to further improve it.

## Agriculture

Whether you require a dependable wheel for your combine harvester, tractor, baler, or trailer, Accuride's comprehensive wheel portfolio in the agricultural sector always offers the perfect solution. We understand the diverse demands of agriculture and take pride in providing the perfect wheel for each of these crucial machine types.

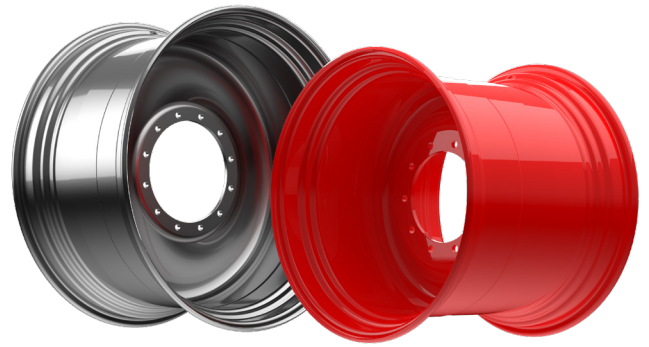
Our partnership with customers is the key to developing tailored solutions. We collaborate closely with you to create wheels that not only meet your current needs but also effectively tackle future challenges. Accuride is committed to offering the most precise solutions that enhance your efficiency and maximize productivity.

Rely on Accuride to equip your agricultural projects with high-quality wheels that stand for durability, performance, and innovation.

Our wheels adhere to strict ETRTO and EUWA standards, offering a technically advanced solution for various applications in agriculture and municipal sectors. Our broad portfolio allows us to optimally address the diverse requirements of these industries.

With load capacities that meet the highest demands of modern farm machinery, our wheels provide a solid foundation for demanding tasks. Their construction has been specifically designed to withstand the intensive demands of the harvest season. In fact, the load capacity of our products surpasses that of "identical" wheels from our competitors.

Our product range not only encompasses a wide array of RAL colors but also custom colors from manufacturers. We understand that every detail matters and offer the flexibility to customize the color of our wheels to match the individual preferences of our customers.



Diameter	Width
15.3" to 42"	9" to 27"



## Adjustable Wheels

When it comes to the durability of the Adjustable Wheels on your machine, we make no compromises. Our adjustable wheels are distinguished by their exceptional strength and reliability, effortlessly meeting the demands of challenging work environments.

By using our adjustable wheels, you have the ability to customize the wheelbase of your tractor according to your preferences and use the same wheels for various agricultural applications. This flexibility allows you to optimize your machine for different field conditions, thereby maximizing efficiency.

With a comprehensive selection of discs and rims, you can customize the wheels to fit each tractor and hub individually. This ensures smooth integration and enables you to achieve optimal performance, regardless of the model and configuration.



Diameter	Width
15" to 38"	8" to 15"

## Flotation Wheels

Whether you're working on dry or wet terrain, our wide wheels effortlessly adapt to varying ground conditions, providing you with optimal grip and traction. Our range of sizes is impressive – from the compact 15.3 x 9.00 to the impressive 30.5 x 28.00. We offer you the freedom to choose the right size for your machine, thus achieving the best possible performance. With our broad range of RAL colors and factory finishes, we can cater precisely to your requirements. Trust in Accuride wheels to conquer your agricultural and municipal challenges, elevating your productivity to a new level.



Diameter	Width
22.5" to 30.5"	16" to 28"



## Construction

From front loaders to telescopic handlers, excavators, articulated dump trucks, or road rollers, we offer a comprehensive range of wheel options for these versatile machines. Accuride understands that wheels in these applications are subjected to extreme working conditions, necessitating long life and high durability.

Our expertise in producing wheels for original equipment manufacturers, backed by our in-house development and research, allows us to precisely understand the purpose of each machine. This enables us to design and manufacture wheels that are perfectly tailored to their intended use. Trust in Accuride when you need wheels that must meet the demands of the most challenging work environments.



Diameter	Width
12.75" to 32"	6" to 25"



## Multipiece Wheels

Our portfolio also includes 3- and 5-piece wheels. Our products are characterized by impressive load capacities, delivering reliable performance and resilience under high loads and speeds to withstand even the most demanding operating conditions.

Our robust design ensures optimal performance. The increased stability of the wheels and effortless tire mounting make them the ideal choice for heavy machinery.



Diameter	Width
20" to 25"	7" to 25.5"

